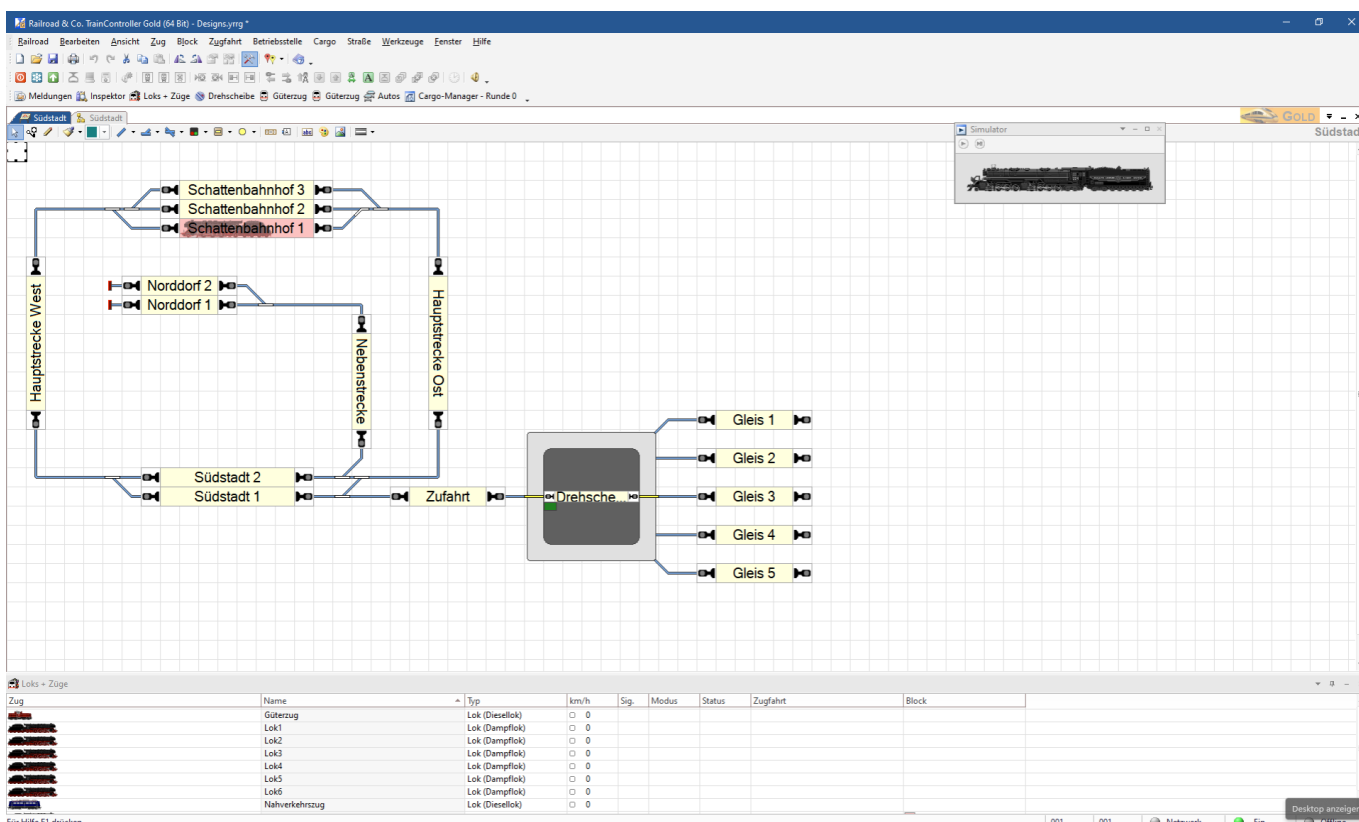


# Die Designs im TrainController Gold (Version 10)

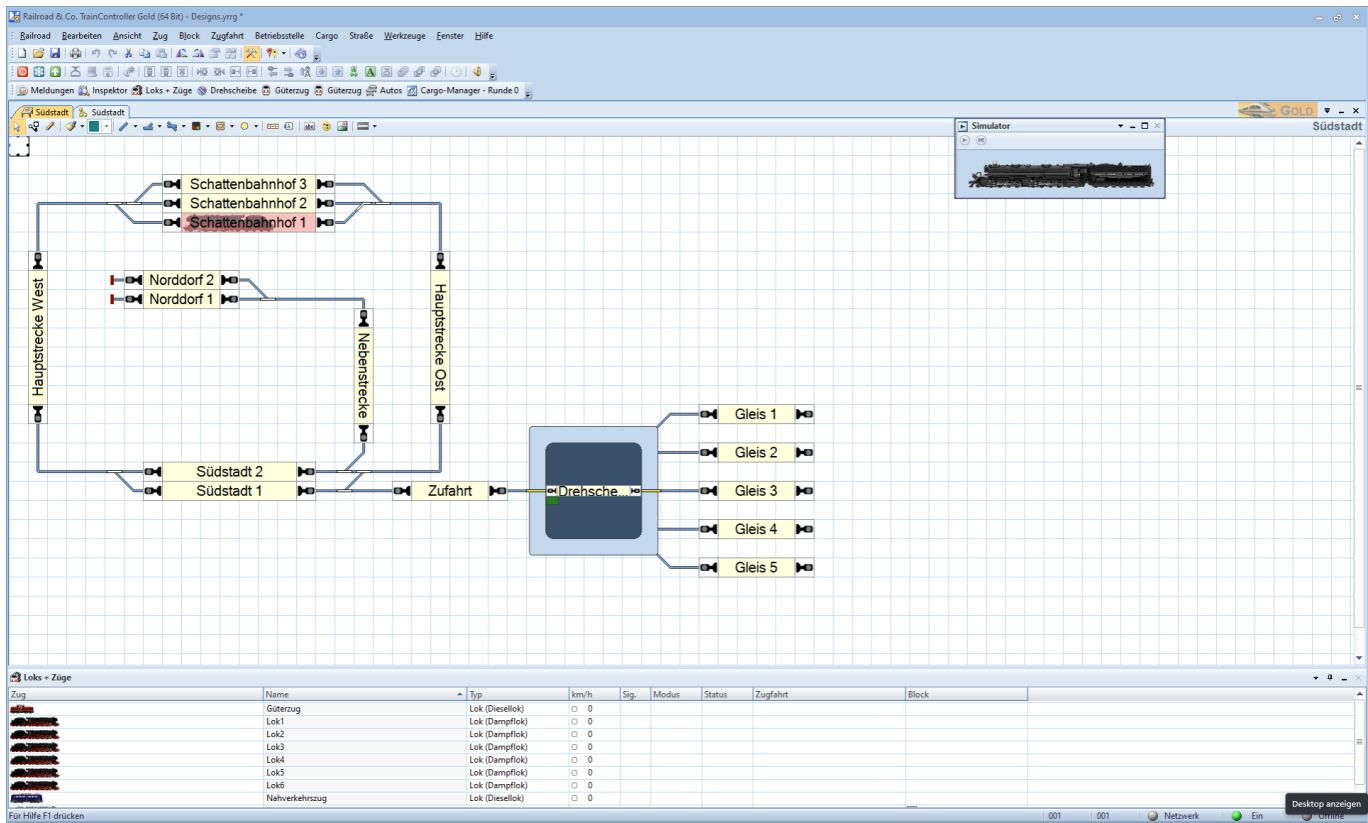
Über „Ansicht“ -> „Design“ kann man die grundlegende Designvoreinstellungen wählen

## Version 10



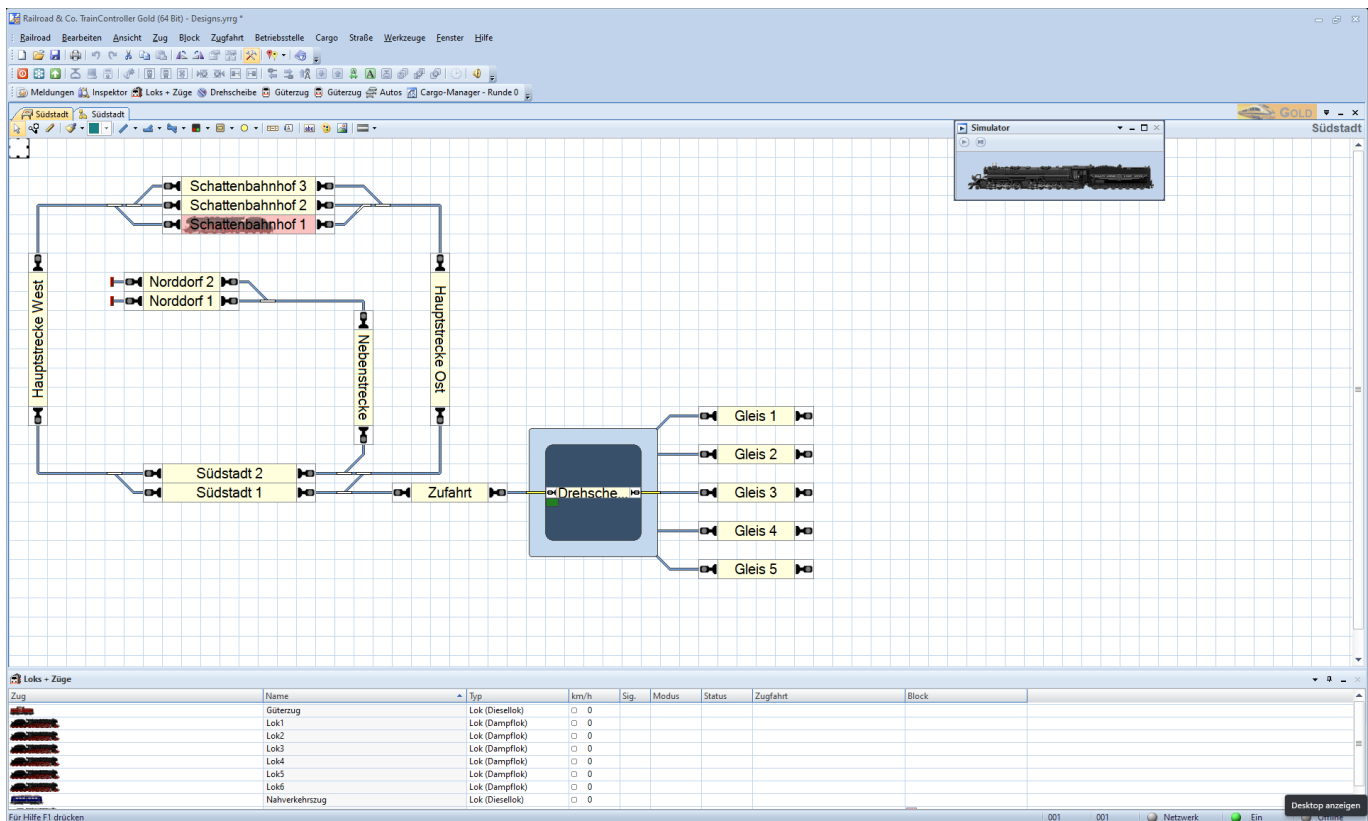
Design Version 10

## Version 9



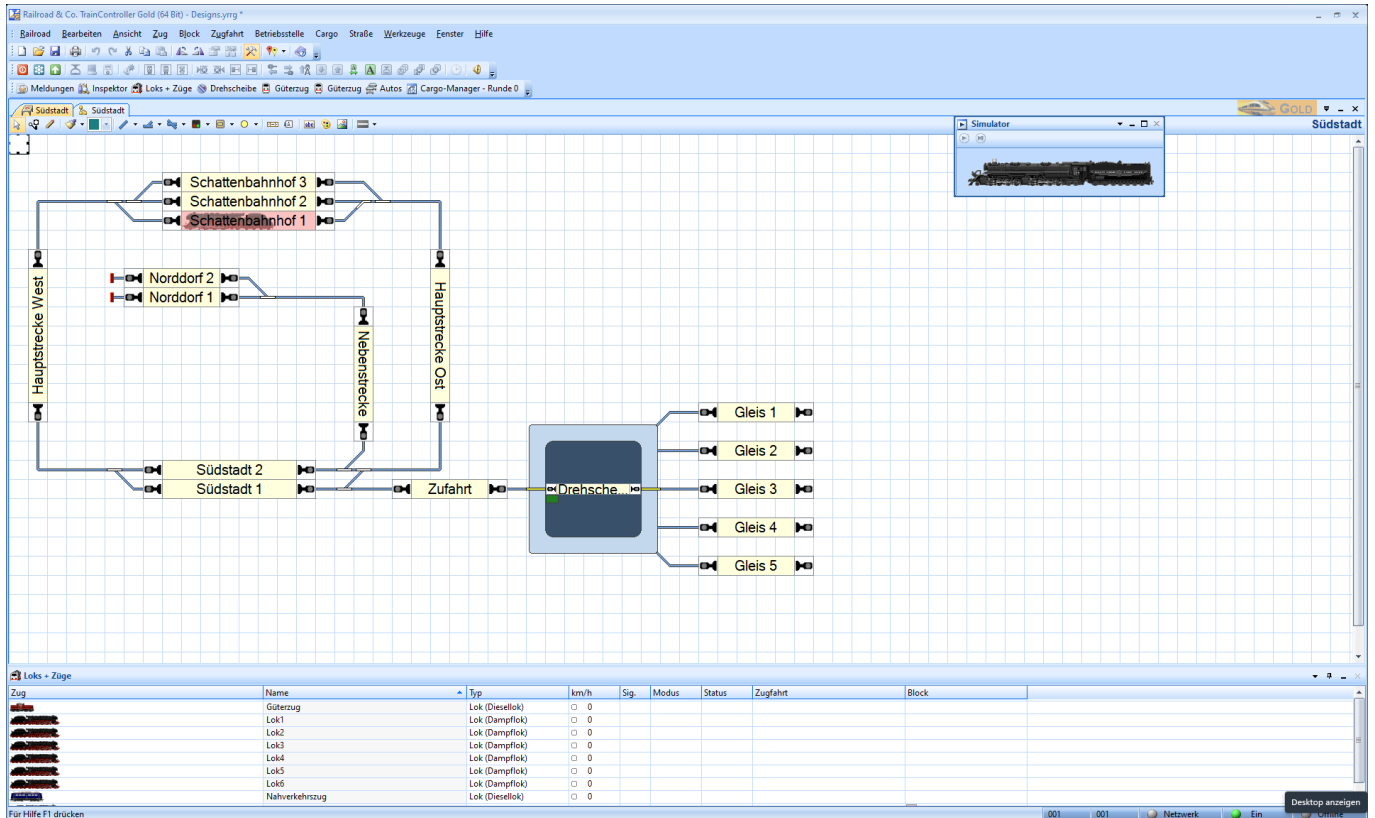
Design Version 9

# Version 8



Design Version 8

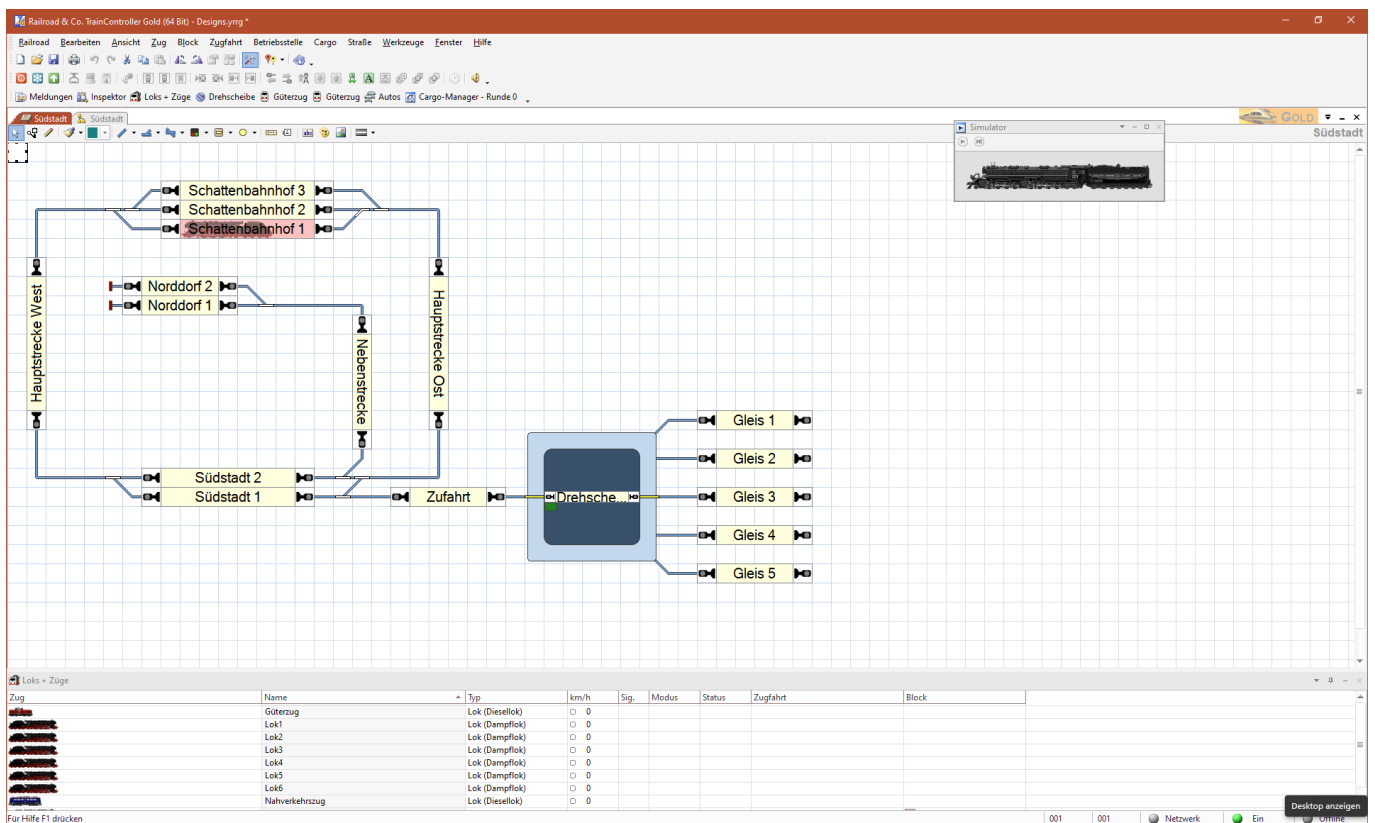
# Version 7



Design Version 7

# Office

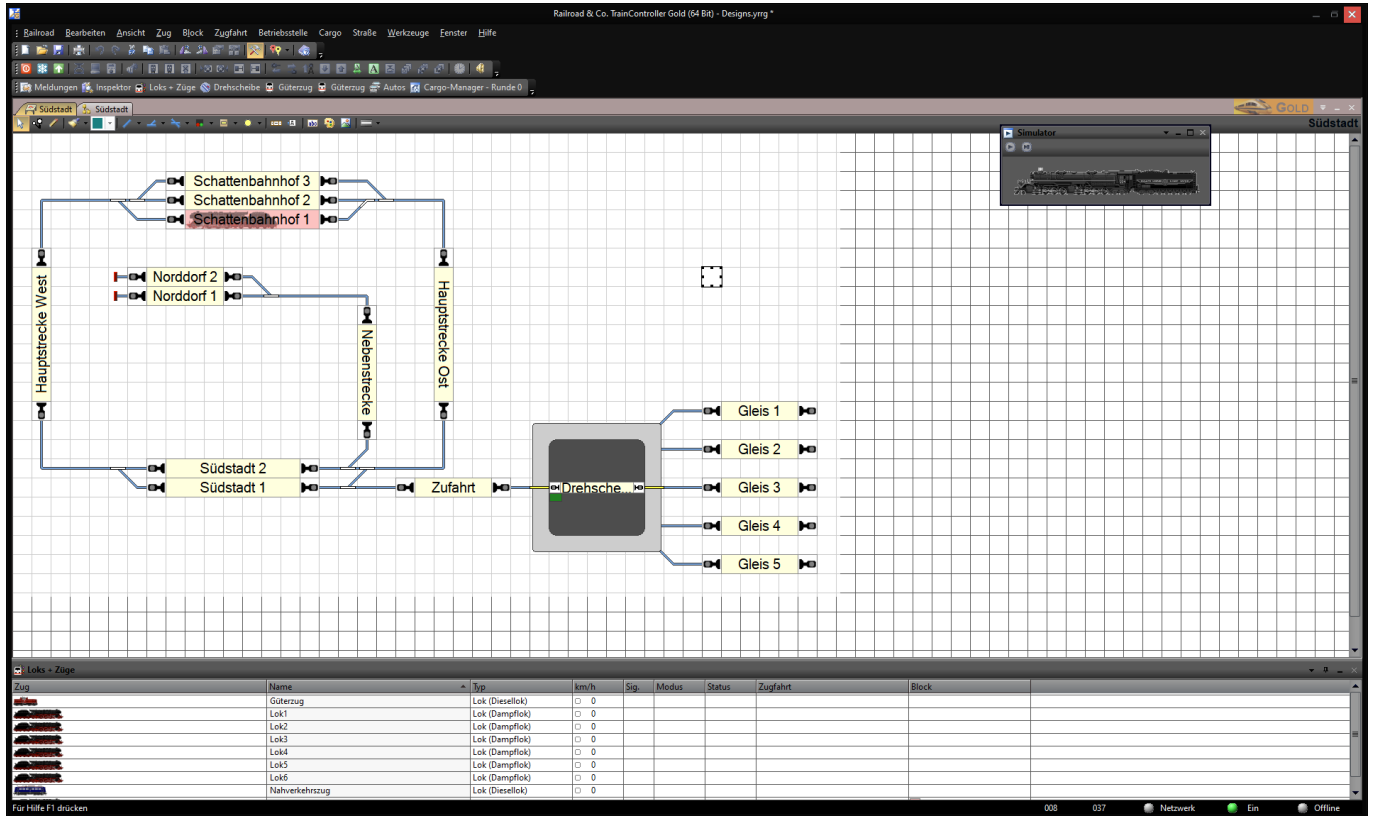
z.B. „Microsoft 354 rot“



Design Microsoft 354 rot

# Visual Studio

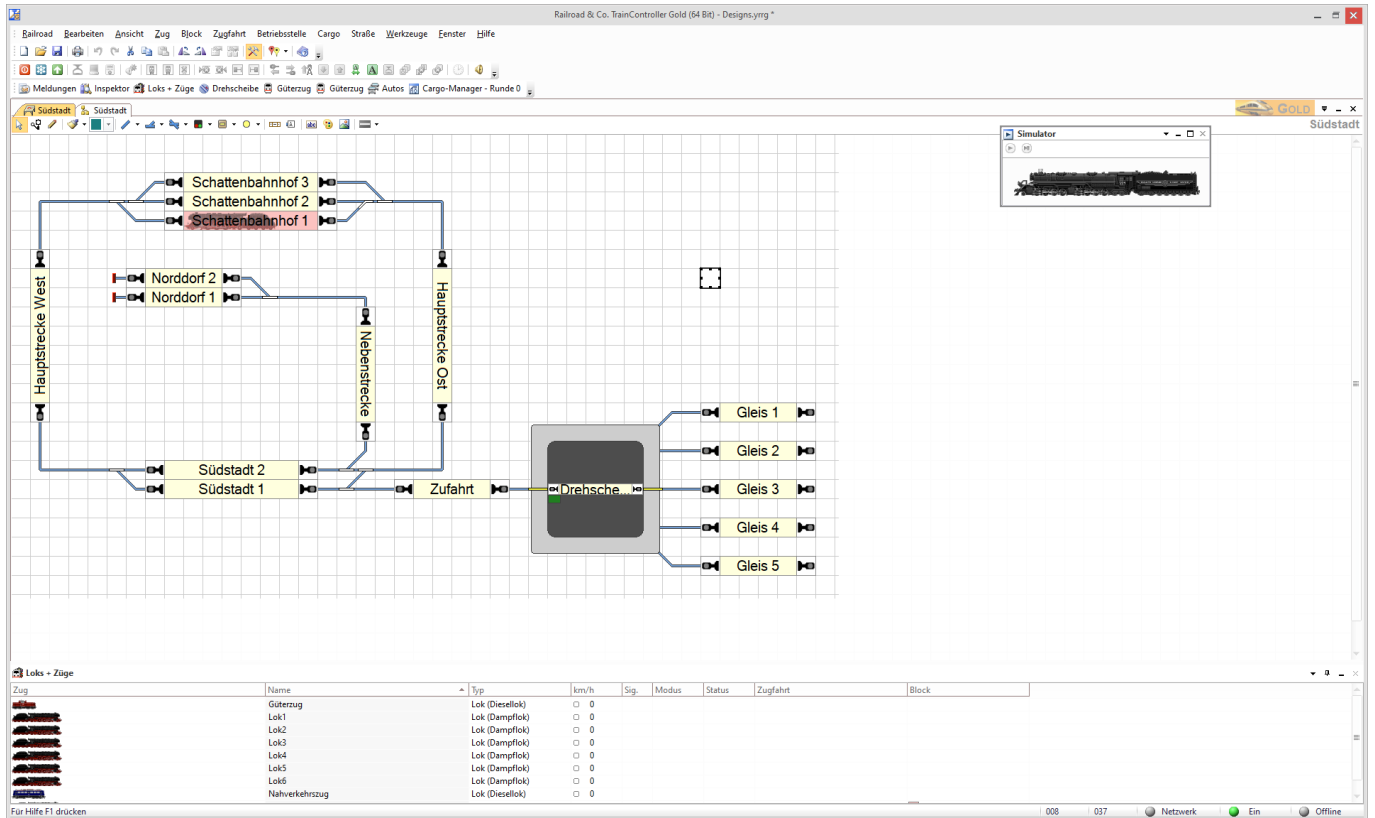
z.B. „Visual studio 2015 dark“



Design Visual studio 2015 dark

# Windows

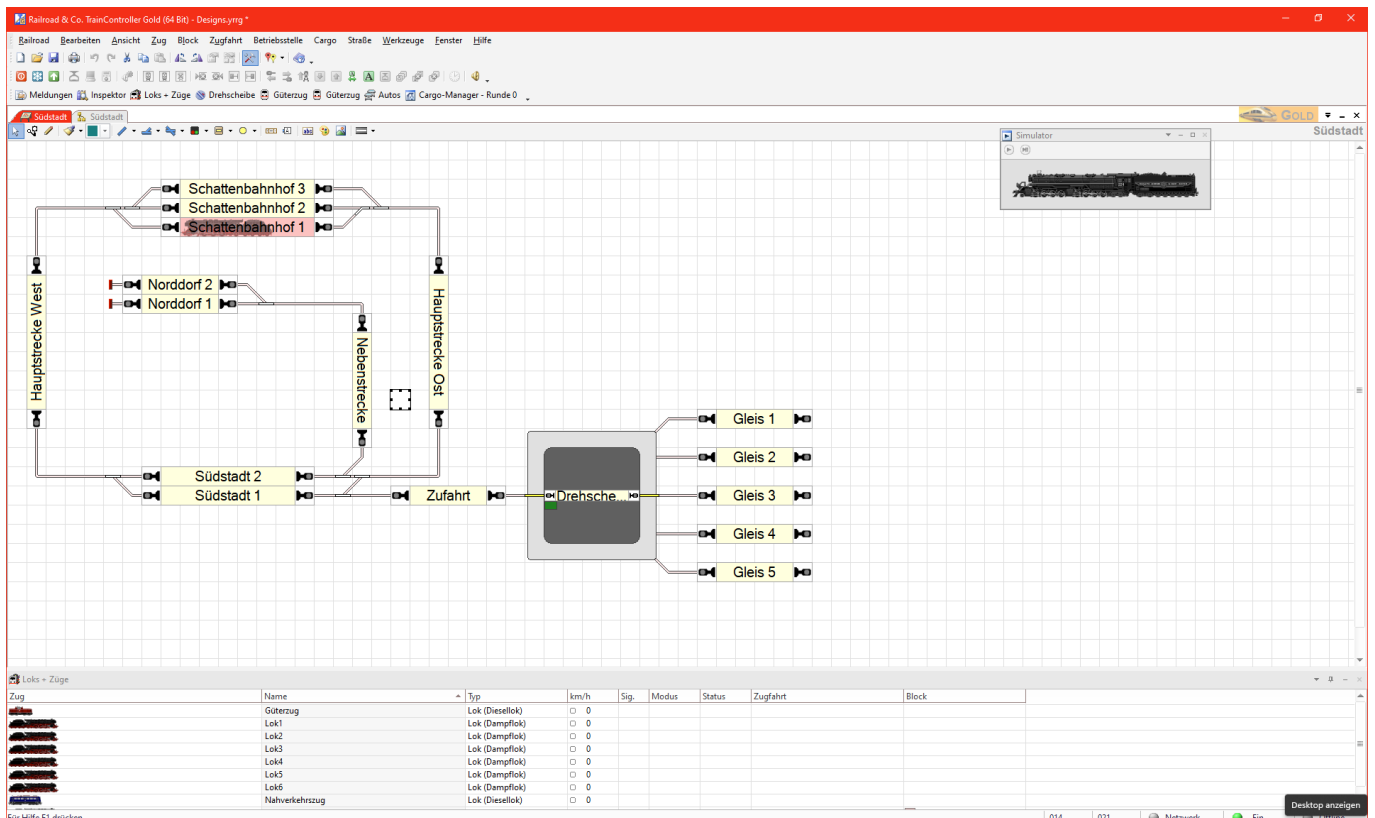
z.B. „Windows 10“



Design Windows 10

# Extra

Elgene Anpassungen der Farben über „Extra“



Design Extra

From:

<https://wiki.modellbahn-anlage.de/> - **Wiki der Modellbahn-Anlage.de**

Permanent link:

<https://wiki.modellbahn-anlage.de/tc/designs/modellbahn-wiki>

Last update: **26.07.2024 23:57**

